

## Pattern Viewer

Name:

Children Sailing In A Tub

Color:

Black

Body type:

Earthenware

Category:

Children's Subjects / Children's Activities

Border:

Miscellaneous / Molded rim / Daisy border

Central pattern image:



Overall pattern image:



[Click image to enlarge.](#)

Additional image:

Border image:



[Click image to enlarge.](#)

Source image:

Makers and Marks:

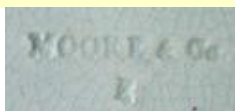
Samuel Moore & Co.

S. M. & Co.

1803 - 1874

Sunderland

County Durham



Type: TEXT-Impressed  
[Click image to enlarge.](#)

Predominant features:

Boy with flag

Boy with pole

Children in a tub

Girl At Window

River

Stream

Additional information:

Plate, 7.5 inches. The pattern is probably part of a series that depicts children at play. Riley 1991, pp. 62 and 63 (203) shows a pattern with children and hoops that is marked "...E & Co", which Riley thinks is probably Moore & Co. To see more patterns with children at play, search Children's Subjects/Children's Activities in the database. As the pattern is not documented elsewhere, it has been given a TCC assigned name.

Bibliography:

Riley1991:

Riley, Noel Riley. Gifts for Good Children: the History of Children's China, part I, 1790-1890. Somerset: England: Richard Dennis, 1991.